

Sitting on the Dock

Objectives:

- The students will model the use of camouflage.
- The students will hypothesize methods for survival.

Materials:

Fish patterns, scissors, and markers, crayons, or map pencils

Procedure:

1. Color three fish, then cut them out.
2. Half the students will “hide” their fish in plain sight.
3. The other half closes their eyes; these students are the predators.
4. Once the fish are hidden, the predators are given three minutes to find the fish.
5. Answer questions 1 through 3 in the Results section.
6. Reverse roles. Predators become the prey and hide their fish.
7. Answer questions 4 through 6 in the Results section.

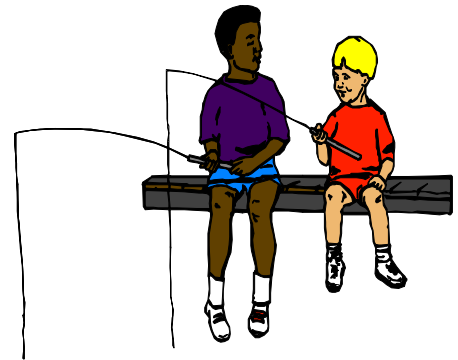
Results:

1. Which fish were found first?

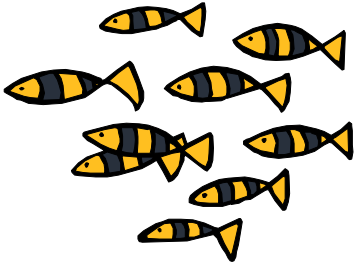
2. Which fish were never found? Why do you think these fish were difficult to find?

3. Is it important for the fish to blend in with it’s surroundings? How do you know?

4. Were the second group’s fish easier or more difficult to find than the first group’s?



5. Why would it be of benefit for a fish to have a dark back and a pale belly?



6. Why do you think fish that live among the corals are such bright colors?

